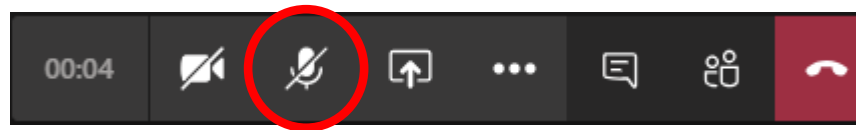


US-12 from Platt Rd to Carpenter Rd
US-23 from Stony Creek Rd to Ellsworth Rd

Virtual Public Meeting

Please mute your microphone, we will open up the meeting for questions at the end.



If you have dialed in on a telephone, use *6 to mute and unmute yourself.

This meeting will begin soon and is being recorded.

US-12 from Platt Rd to Carpenter Rd
US-23 from Stony Creek Rd to Ellsworth Rd

Virtual Public Meeting

Pittsfield Township, Washtenaw County



Thursday, November 12 , 2020

Virtual Public Meeting

Title VI of the Civil Rights Act

Title VI of the Civil Rights Act of 1964 requires MDOT to provide the opportunity for everyone to comment on transportation programs and activities that may affect their community.

Please take this three-question survey:

<https://bit.ly/2JwGR9p>

You can help MDOT comply with Title VI and related statutes, which require the collection of statistical data to aid in assessing MDOT's outreach efforts among those who are affected or interested in this project.

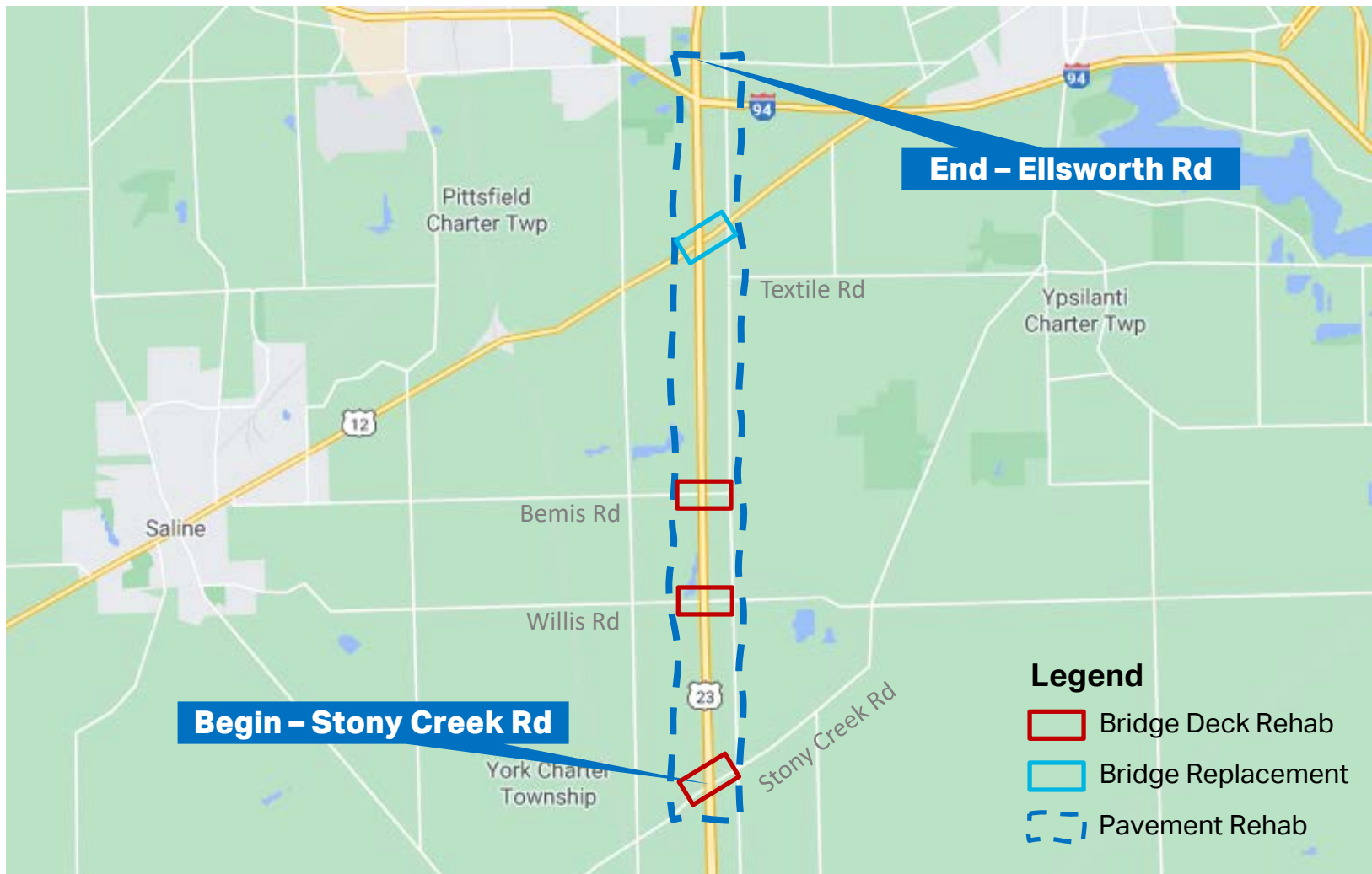
Introduction and Meeting Format

- MDOT Team
 - Lynne Kirby – Project Manager
 - Kari Martin – Region Planner
 - Mark Sweeney – TSC Manager
 - AECOM – Project Consultant
- Virtual Meeting Format – Public Meeting #1
 - Project Presentation
 - Questions will be answered upon completion of the Presentation
 - Please submit questions using chat tool

US-12 Project Limits



US-23 Project Limits



Project Description

US-12

- Intersection improvements at Platt Rd & Textile Rd
- Widening to 5-lane cross section
- Full reconstruction along US-12 (pavement & subbase)
- Drainage upgrades

US-12/US-23 Interchange

- US-12 bridge replacement
- Operational improvements
 - New loop ramp construction
 - Widening weave/merge lanes on US-23 between US-12 and I-94



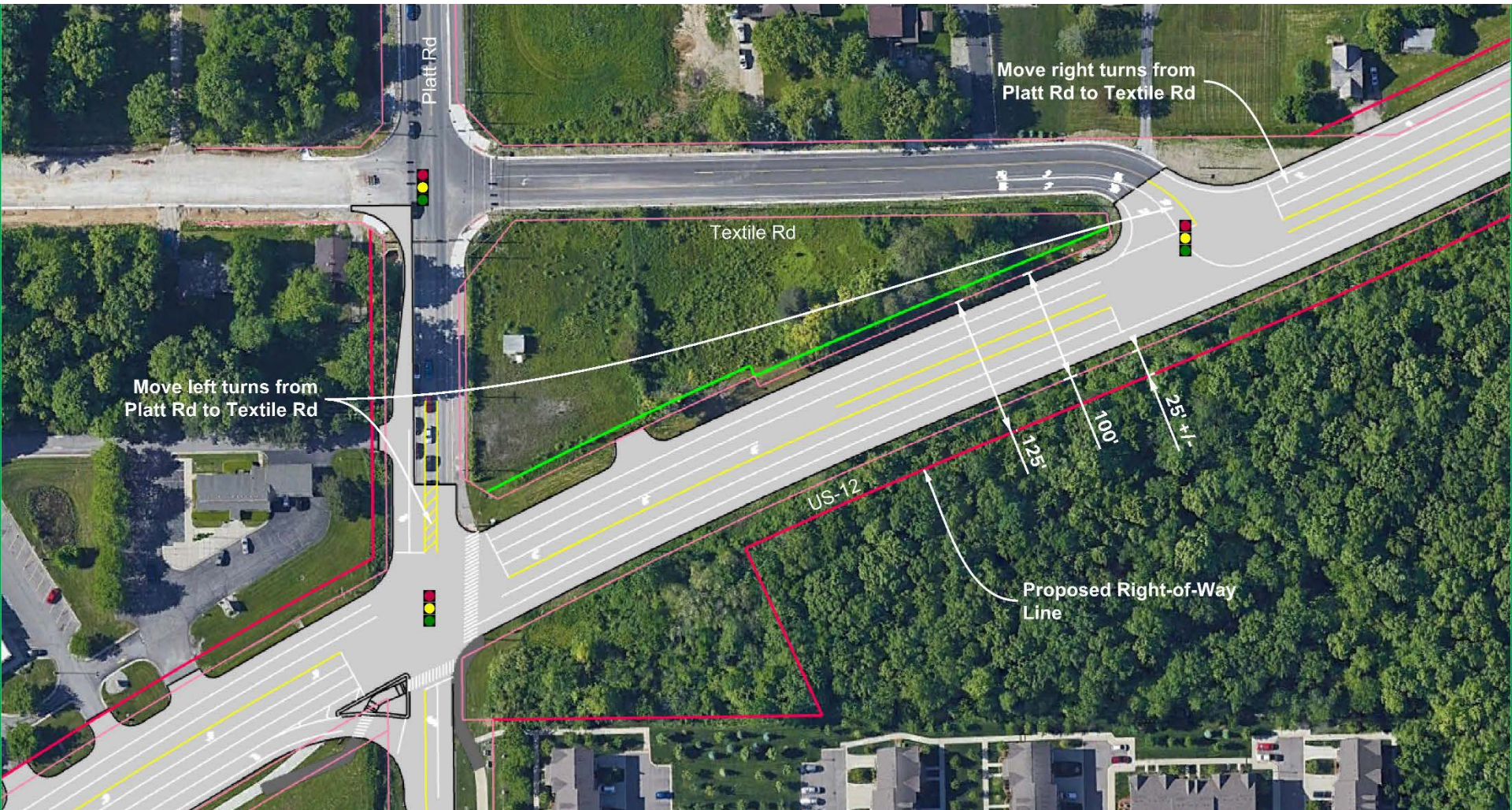
Project Description

US-23

- Pavement resurfacing along US-23 from Stoney Creek to I-94 (mill & overlay)
- Bridge clearance improvements (Bemis Rd)
- Bridge deck rehabilitation on cross streets (Stony Creek Rd, Willis Rd, Bemis Rd)



Reconfiguration of US-12 / Platt / Textile Road Intersection



Reconfiguration of US-12 / Platt / Textile Road Intersection



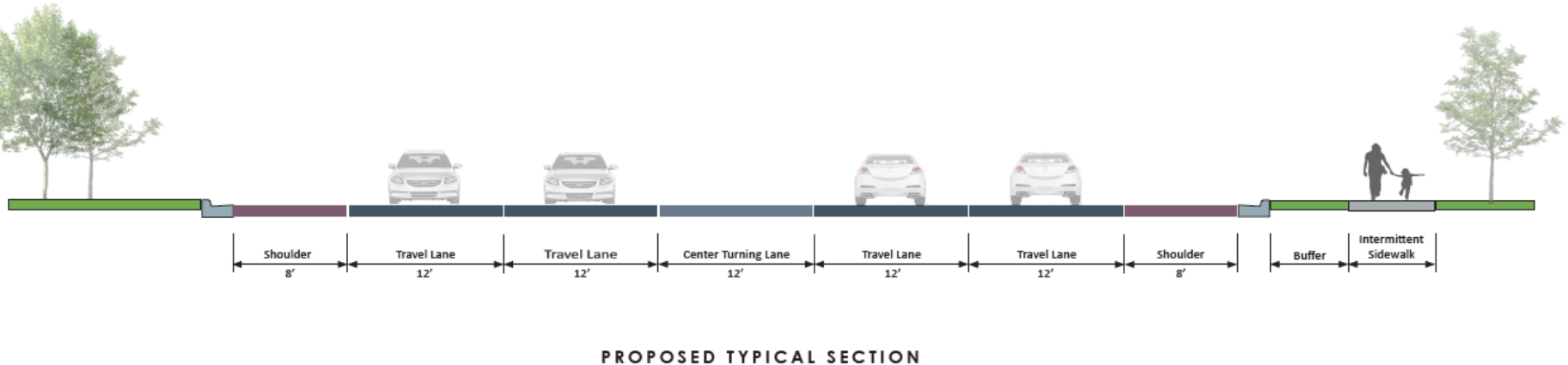
- Textile Road was previously gravel road without signals at Platt Road and US-12 Intersections

- County constructed Platt/Textile portion of overall intersection improvements in 2019



Widening US-12 to a 5 Lane Cross Section

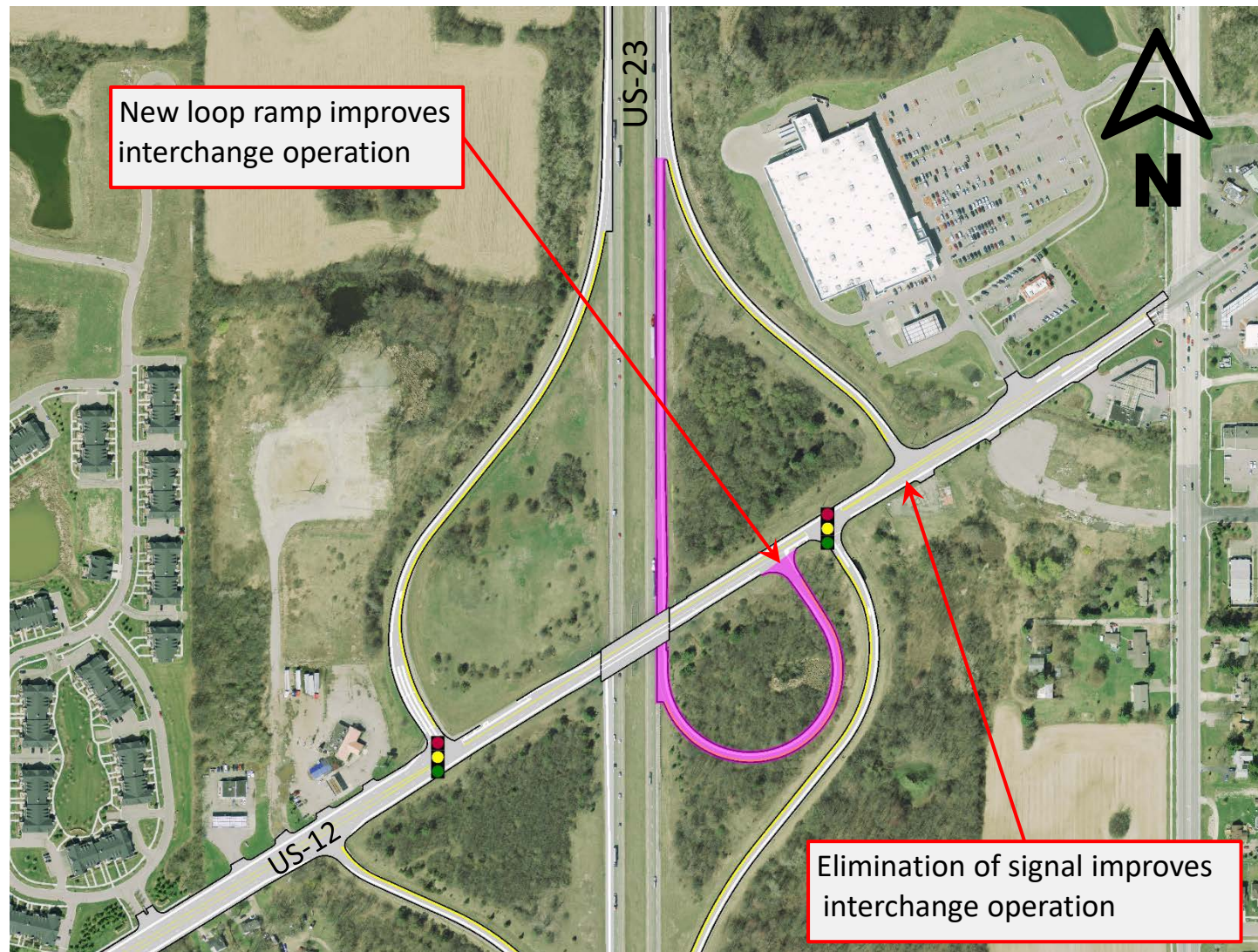
- MDOT Brighton TSC successfully obtained additional operation funds to improve US-12 from Platt Road to US-23
 - Includes widening US-12 to a five-lane pavement
 - Includes improvements to US-12/US-23 Interchange
 - Includes replacement of US-12 bridge over US-23



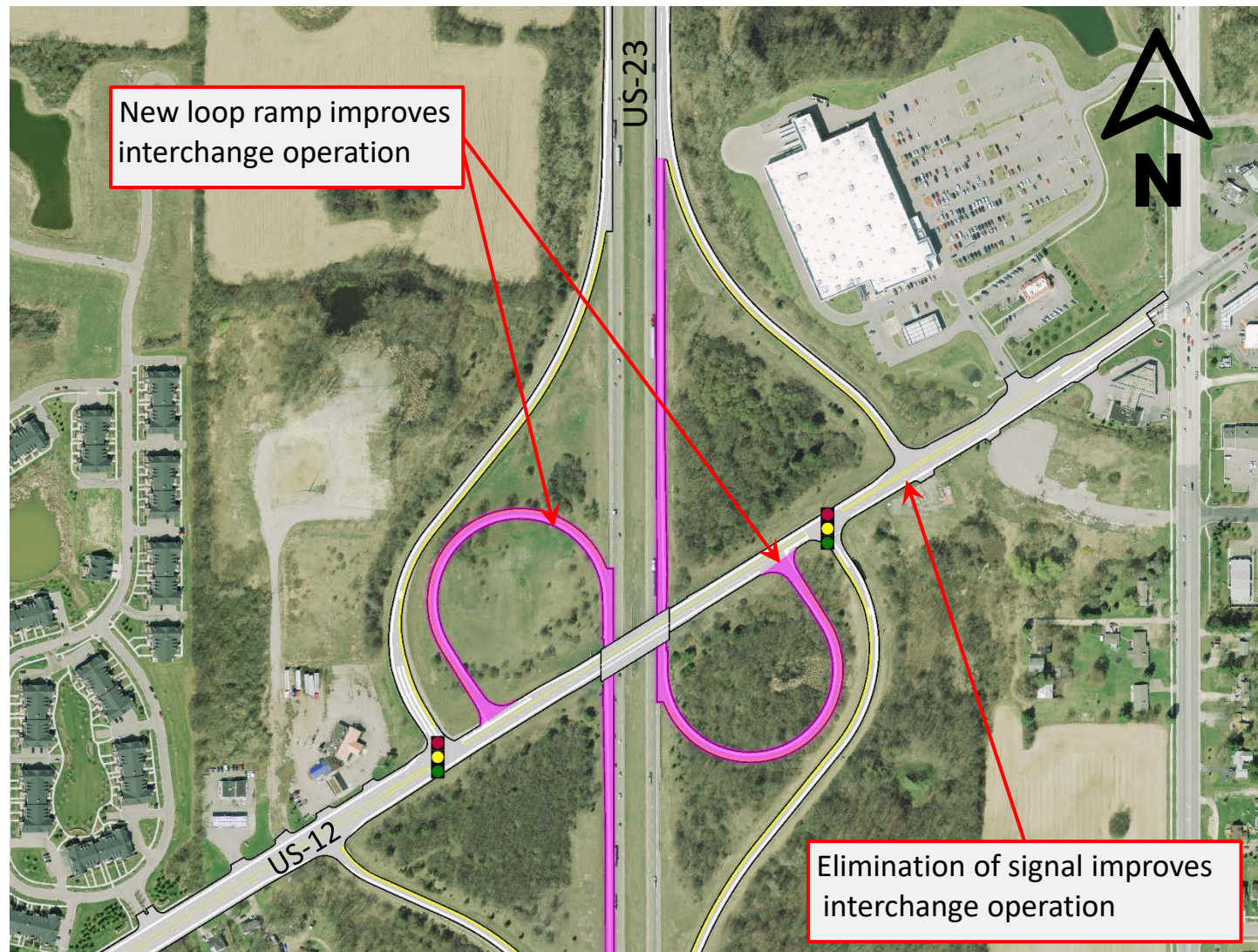
New US-12 Interchange Configuration



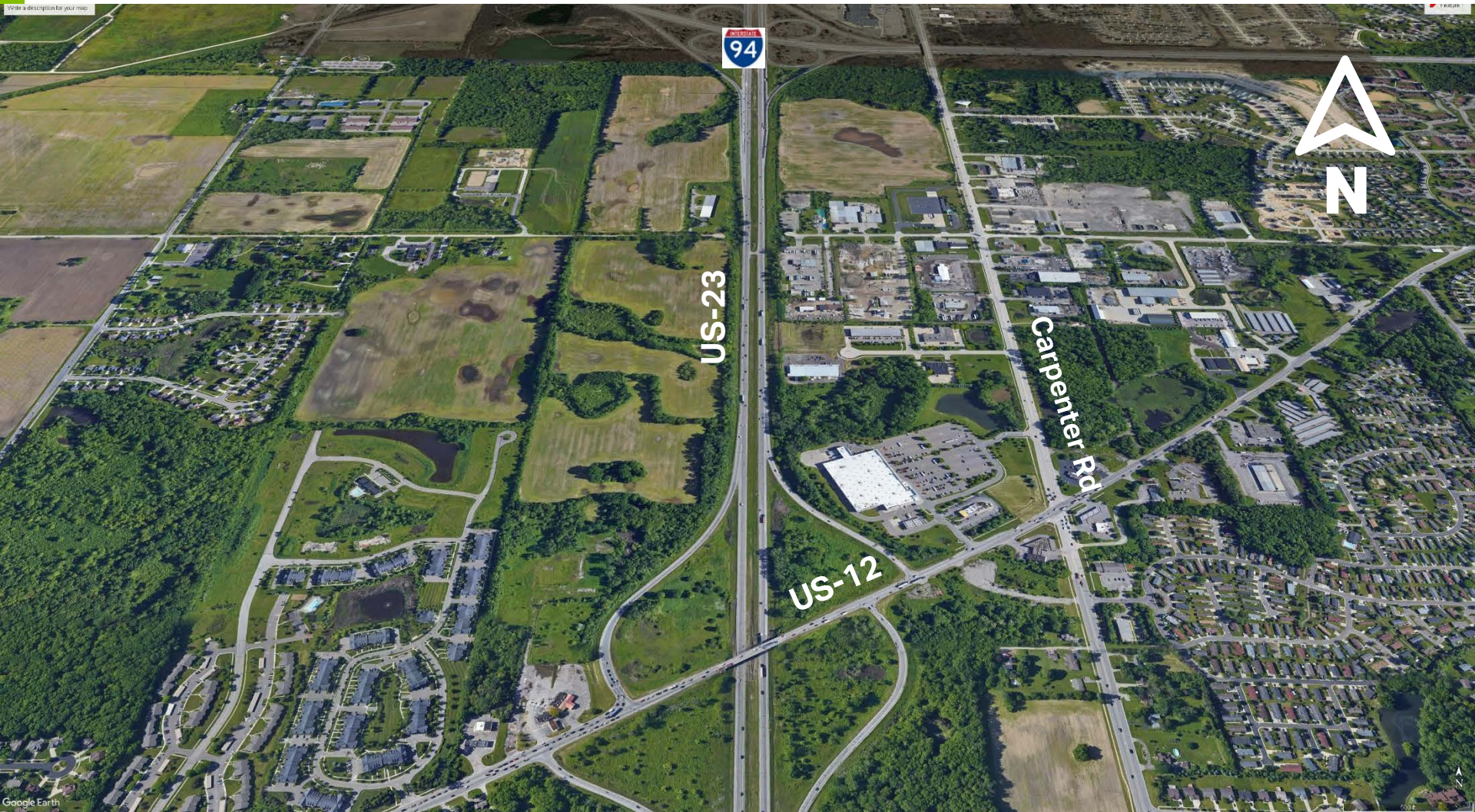
New US-12 Interchange Configuration



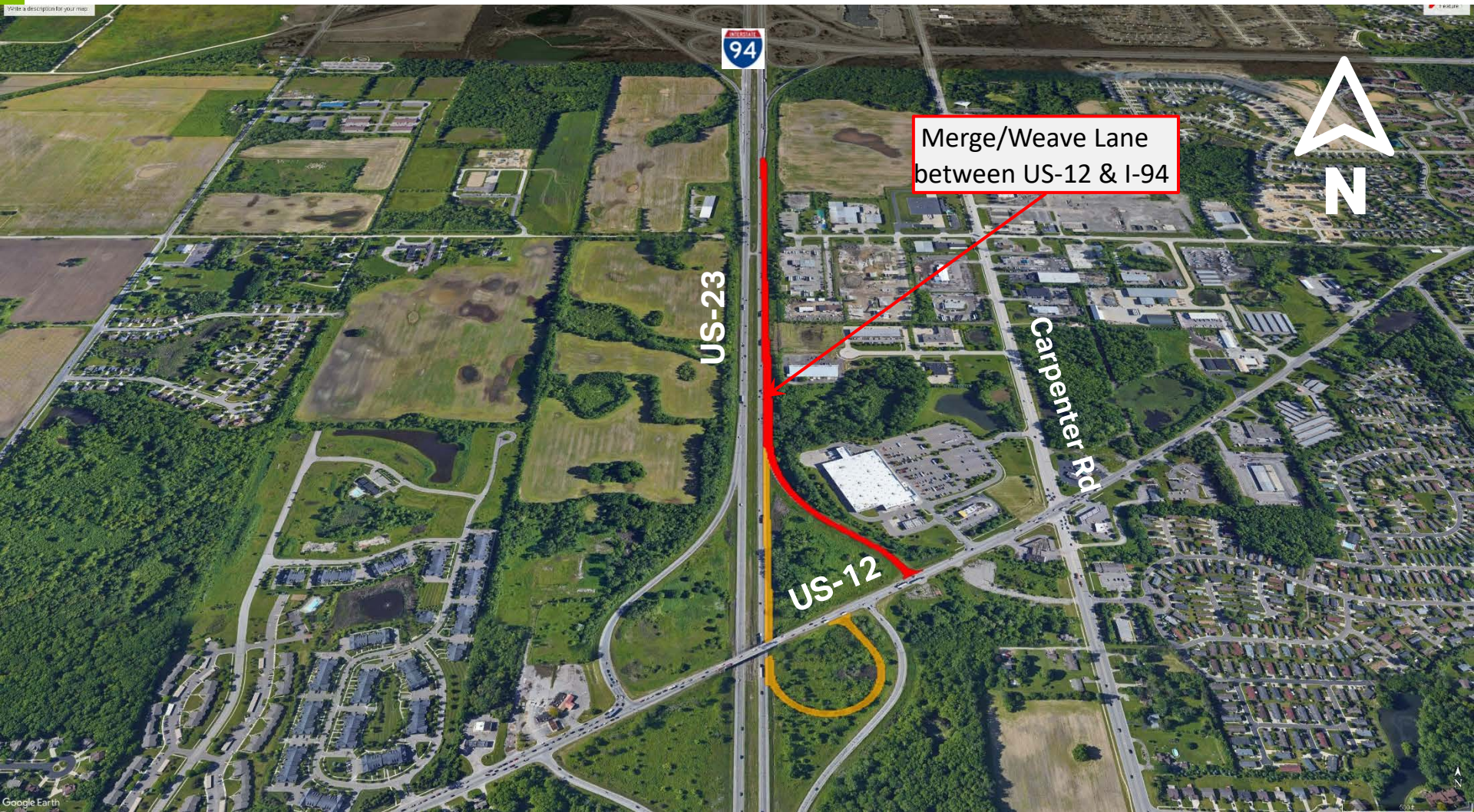
New US-12 Interchange Configuration



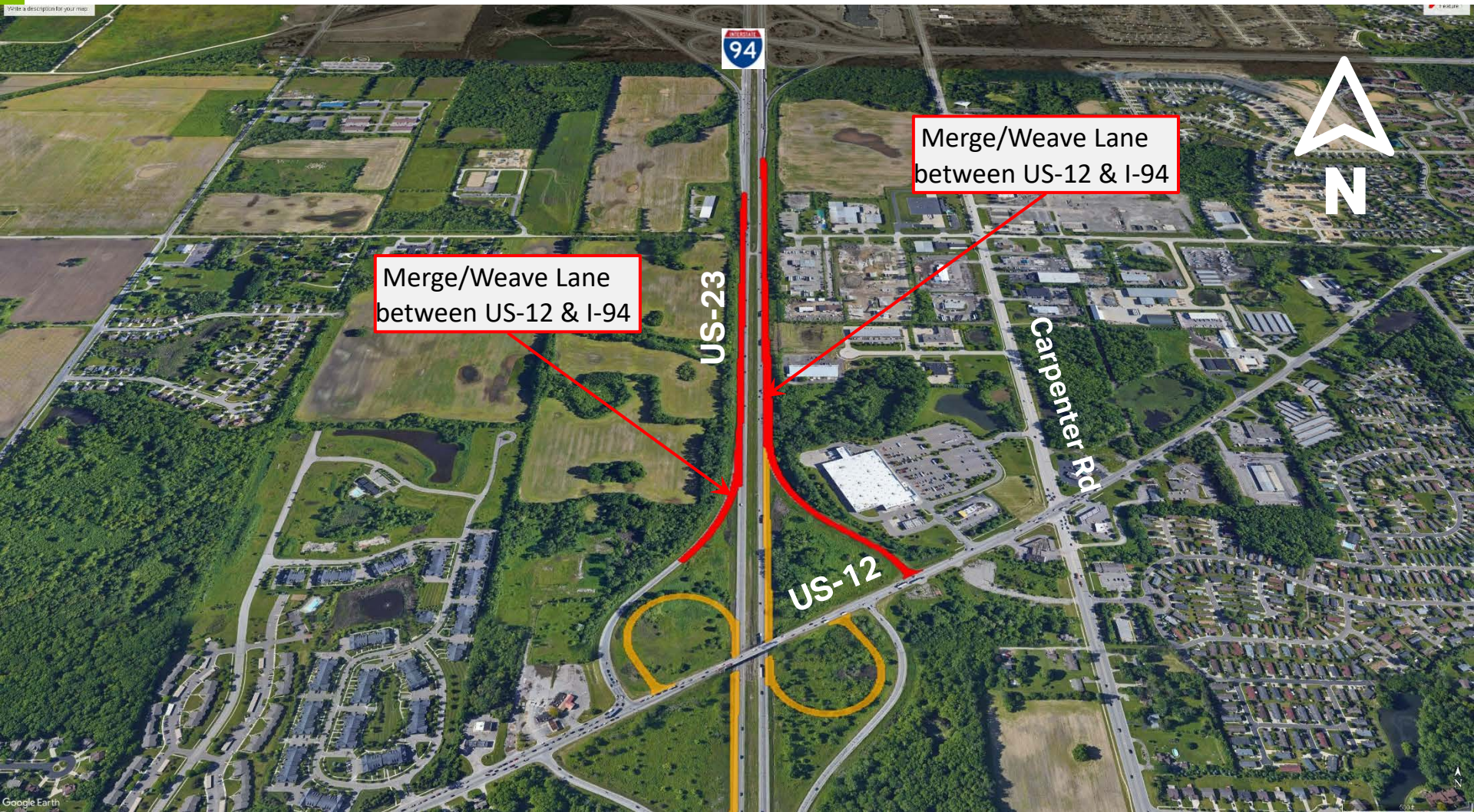
Add Merge/Weave Lanes From US-12 to I-94



Add Merge/Weave Lanes From US-12 to I-94

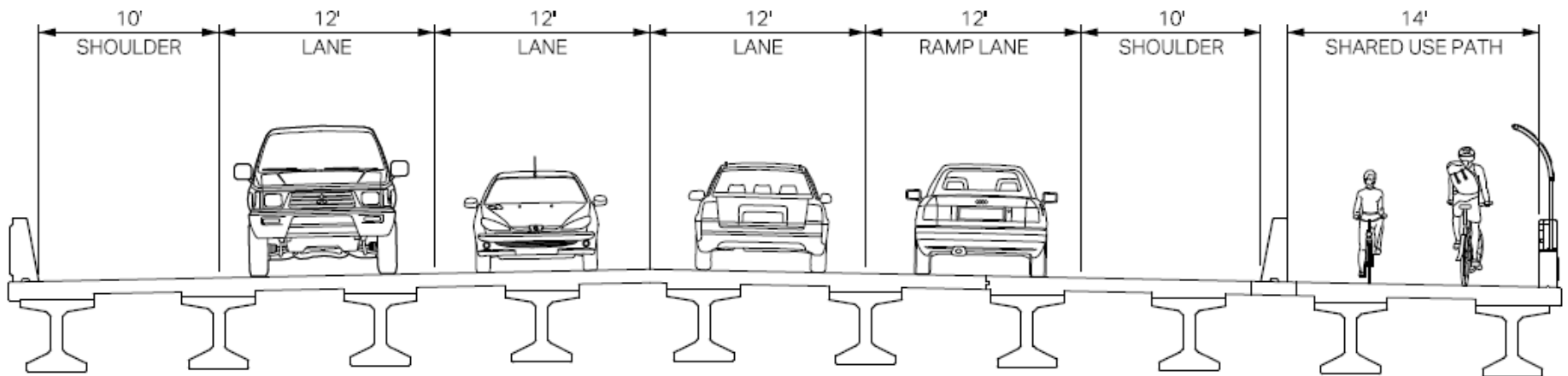


Add Merge/Weave Lanes From US-12 to I-94



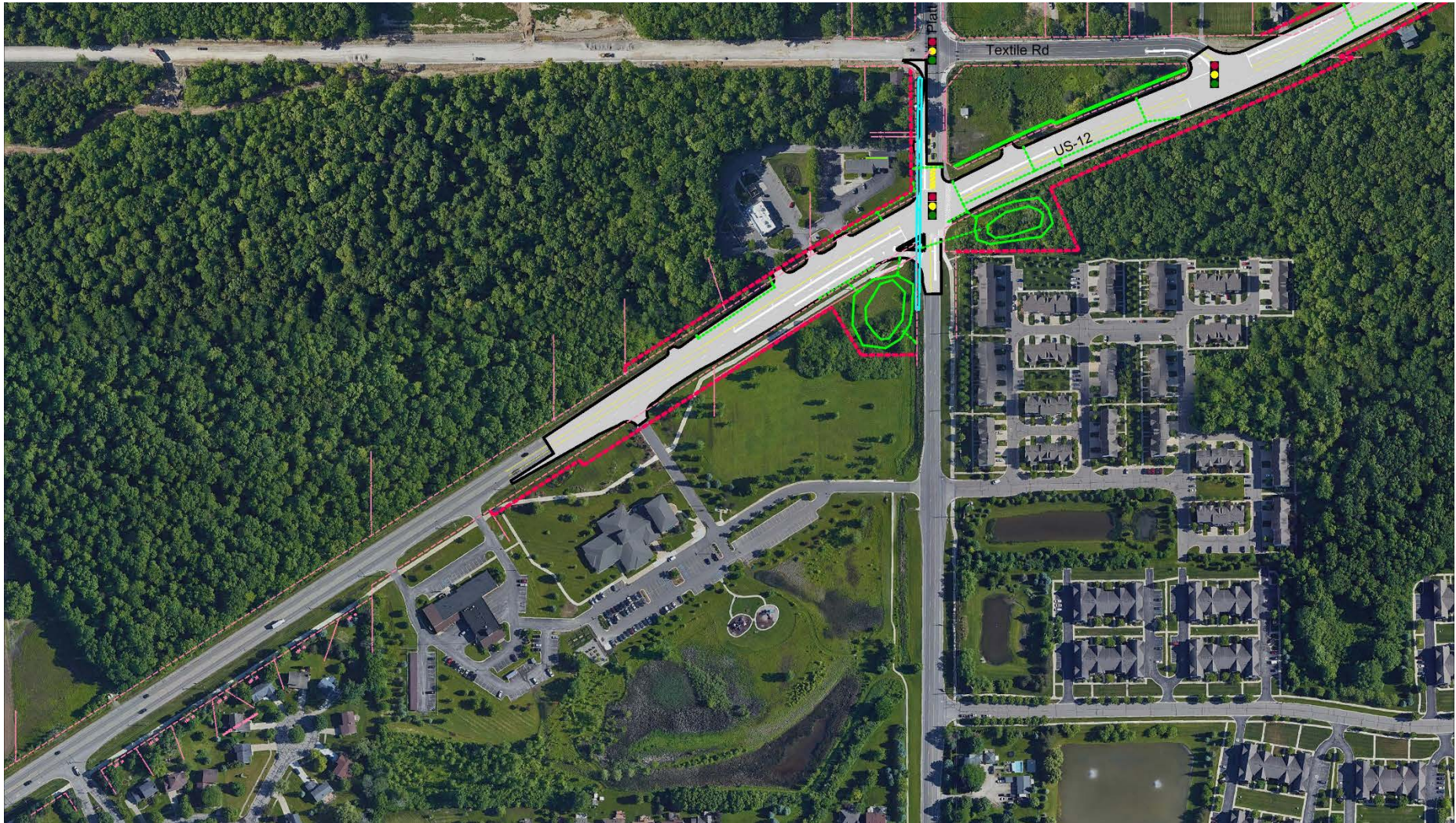
US-12 Bridge Replacement

- Existing Bridge will be removed
- New wider bridge will be constructed
 - Bridge will include two thru lanes in each direction
 - Bridge will include non-motorized path
 - Bridge will include full width shoulders

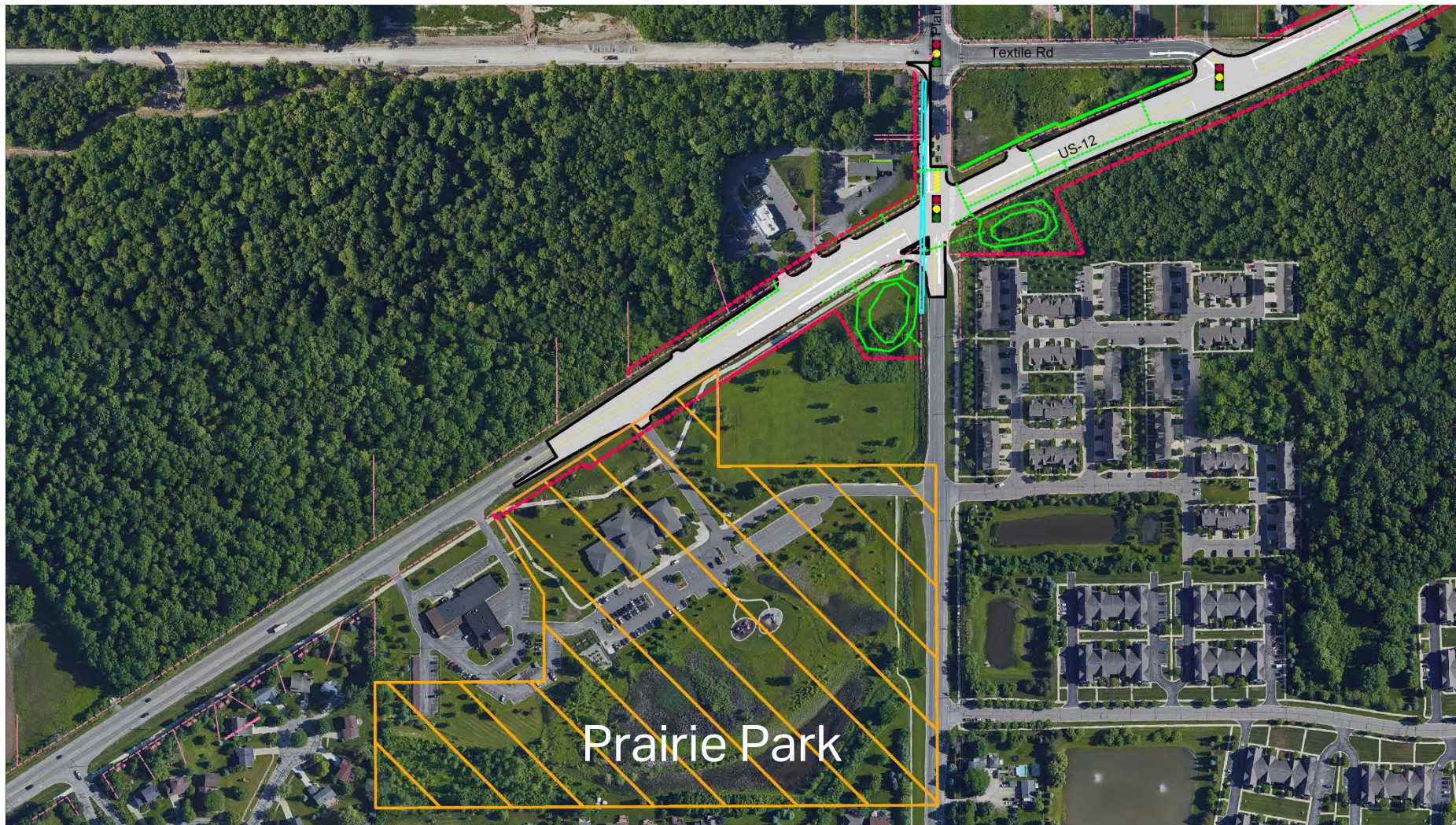


US-12 Bridge Replacement Cross Section (Looking East)

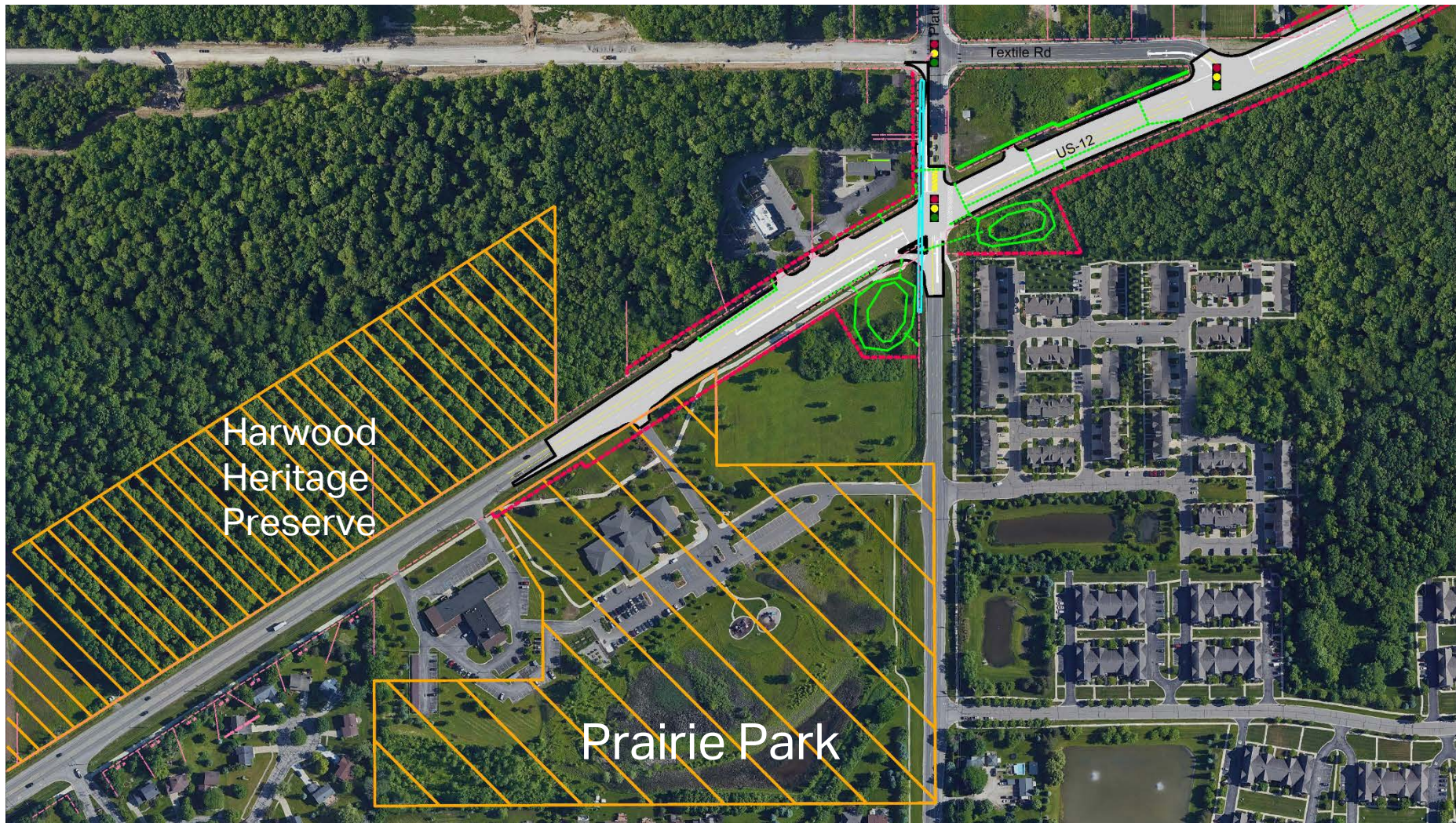
Prairie Park/Pittsfield Preserve Overview



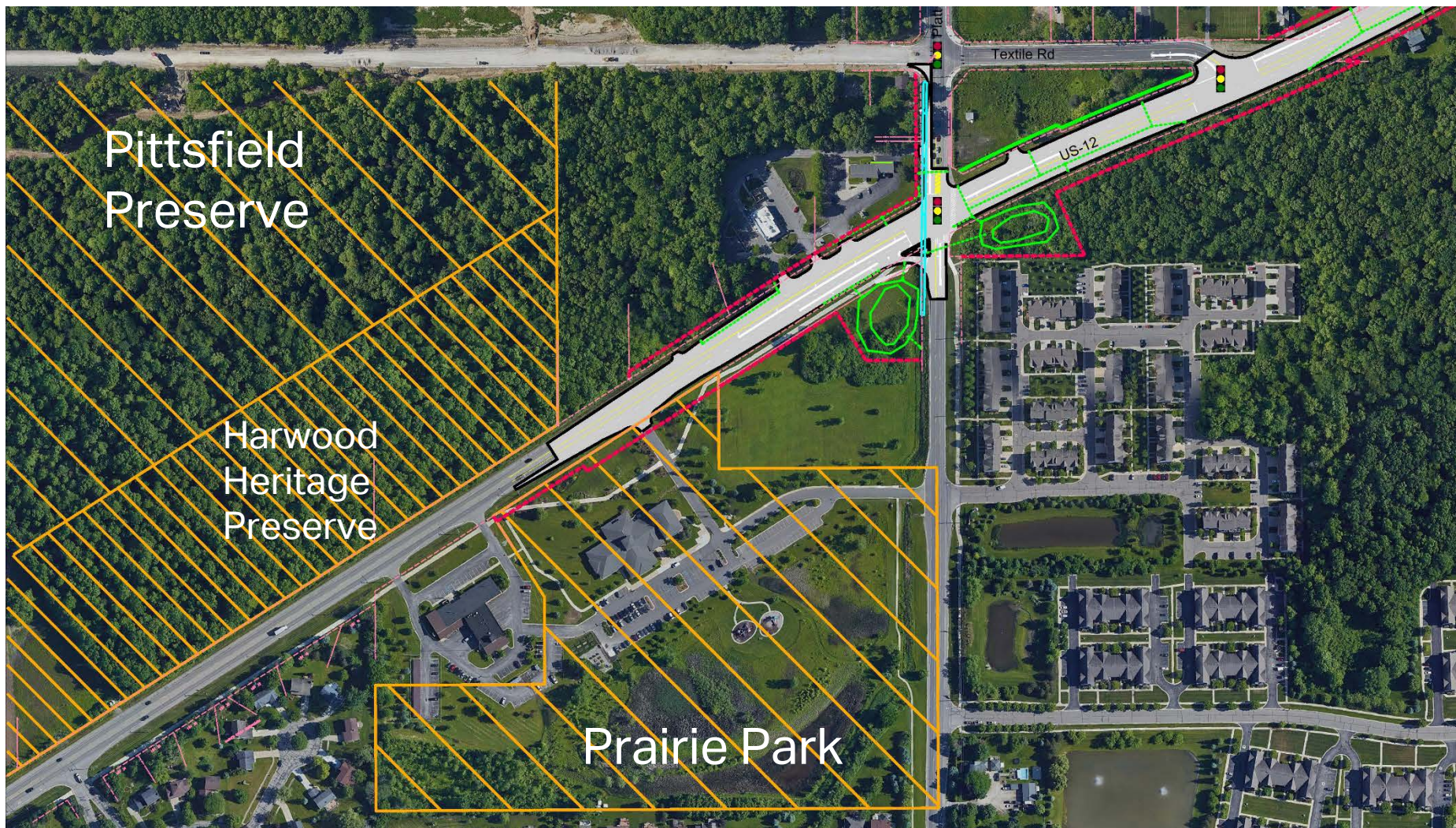
Prairie Park/Pittsfield Preserve Overview



Prairie Park/Pittsfield Preserve Overview



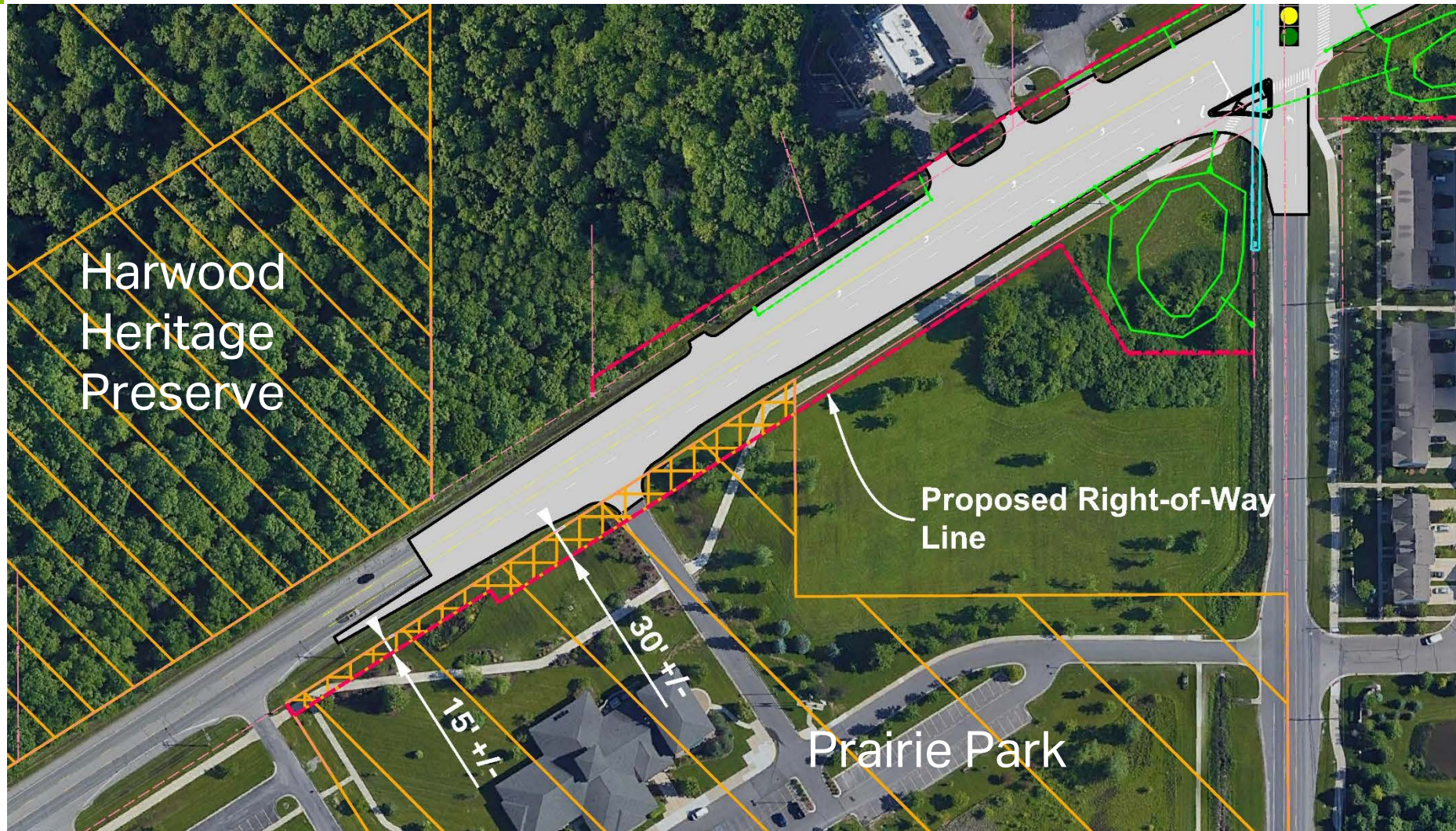
Prairie Park/Pittsfield Preserve Overview



Minimizing Impact to Prairie Park



Minimizing Impact to Prairie Park



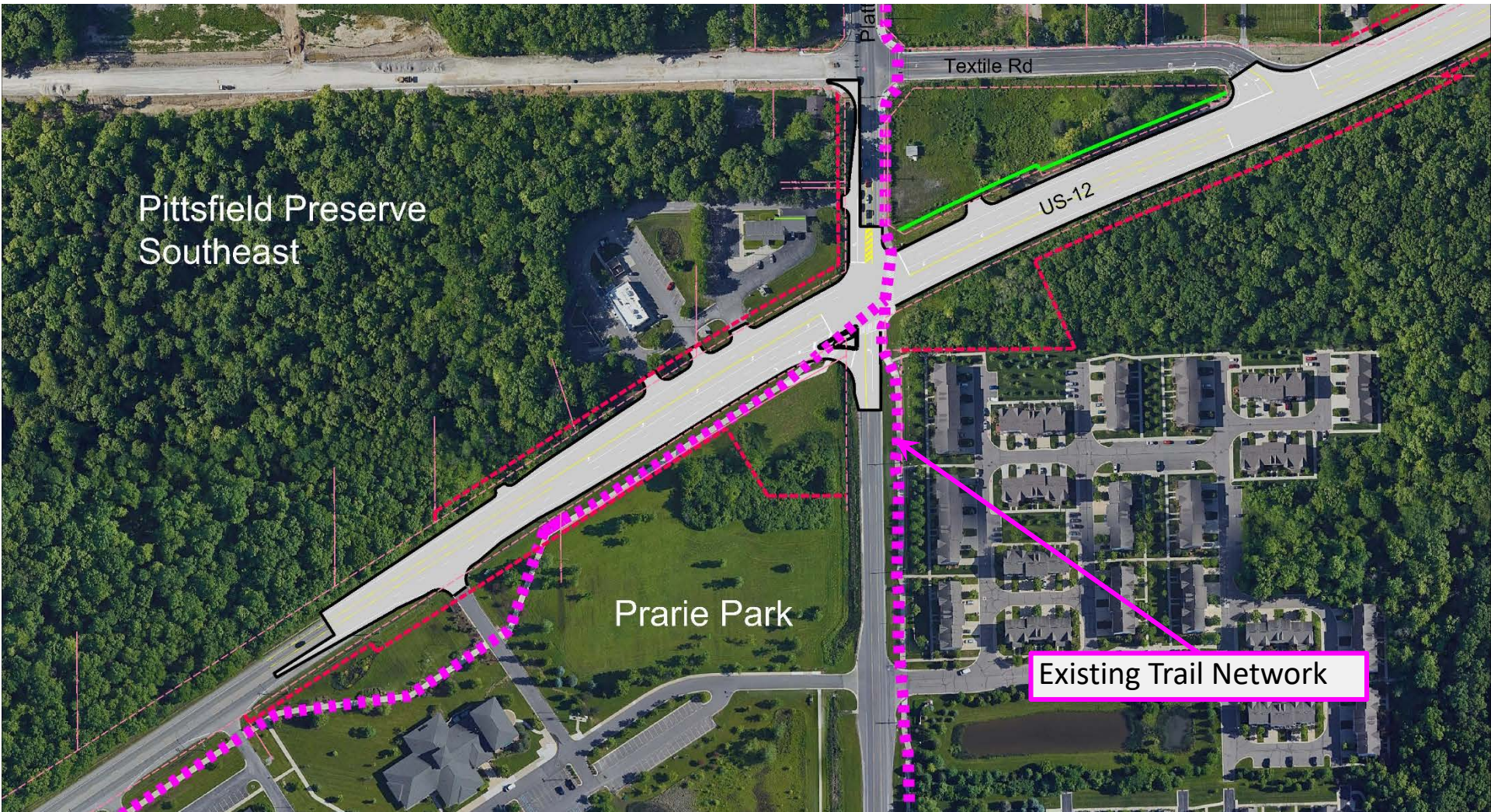
Minimizing Impact to Harwood Heritage Preserve



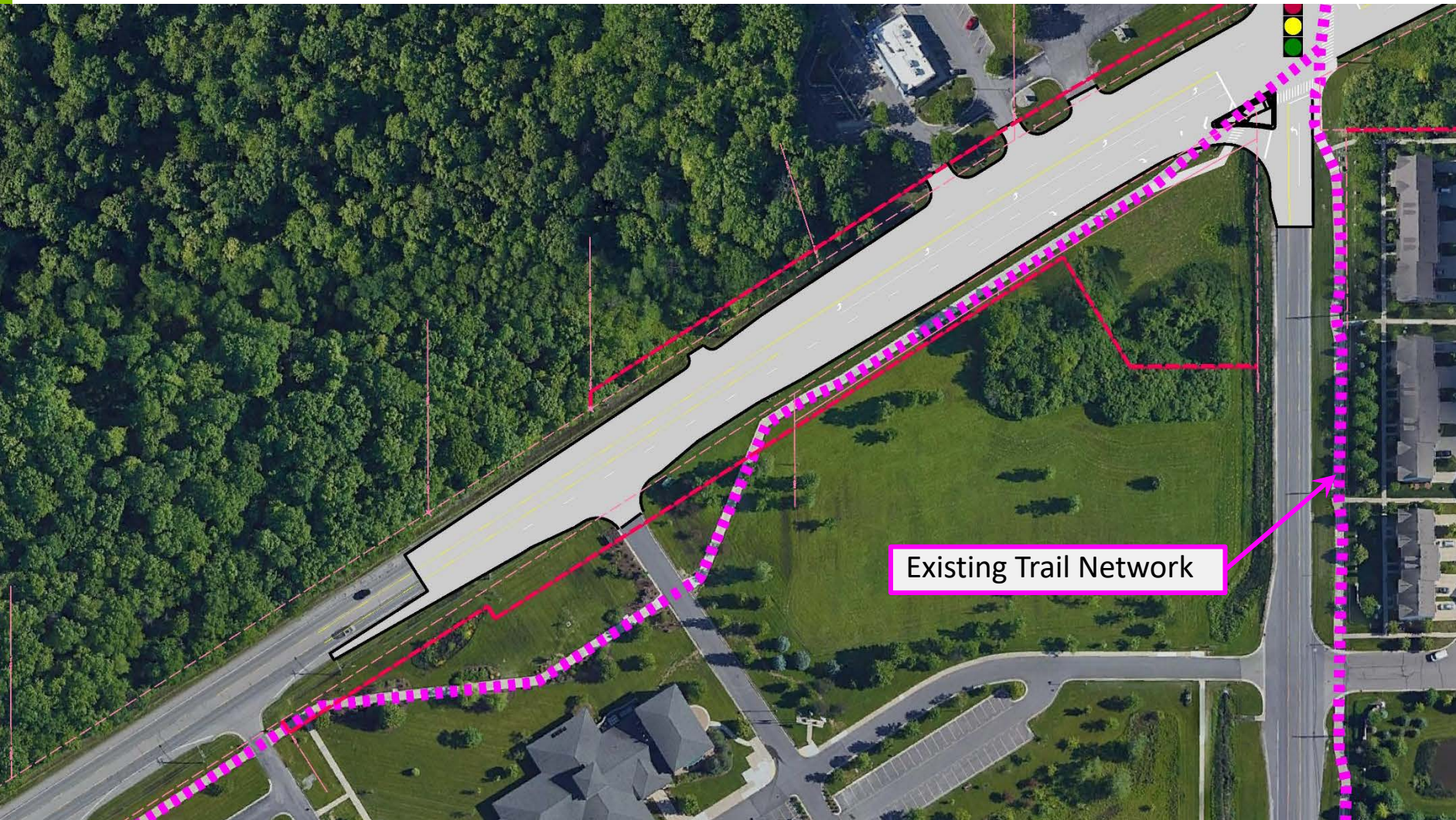
Minimizing Impact to Harwood Heritage Preserve



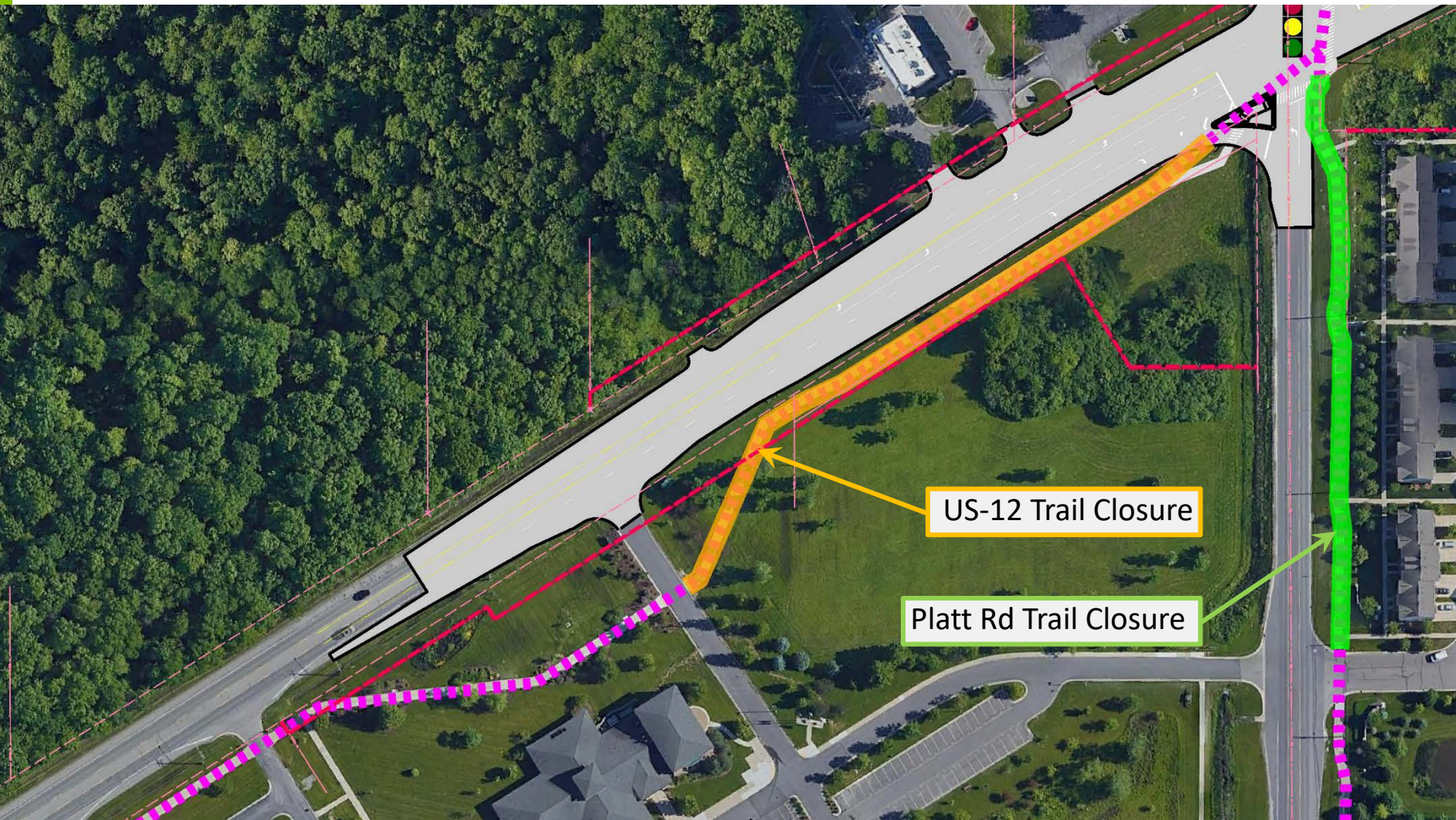
Existing Trail Network



Existing Trail Network



Impacts to Trail Network



Impacts to Trail Network

Trails will be open as much as possible during project construction

- Trail parallel to US-12 west of Platt Rd will close during US-12/Platt Road Intersection construction activity

Trail will be closed, not detoured, when impacted by construction activities. Signs will be provided to notify users of closure.

- Trail parallel to Platt Road will close during US-12/Platt Road Intersection construction activity

Trail will be closed, not detoured, when impacted by construction activities. Signs will be provided to notify users of closure.

Non-Motorized Path Impacts


- Trails will be open throughout most of the construction duration
- Information on trail closures and updates on recreational land during construction will be shared in press releases. Visit [Michigan.gov/MDOT](https://public.govdelivery.com/accounts/MIDOT/subscriber/new) and click on the news and information or subscribe to news and alerts at:
<https://public.govdelivery.com/accounts/MIDOT/subscriber/new>
- Trail users are encouraged to subscribe as noted above and visit MDOT's website and social media for press release updates on possible trail closures and anticipated openings.


US 12 Construction Staging

- Anticipated construction of US-12 under a part width scenario (one side at a time)
- A minimum of one-lane on US-12 in each direction will be maintained at all times
- Left turn lanes at intersections will be maintained where feasible
- Driveway access will be maintained at all time
- Emergency service will have access at all time

Construction Staging – US 23

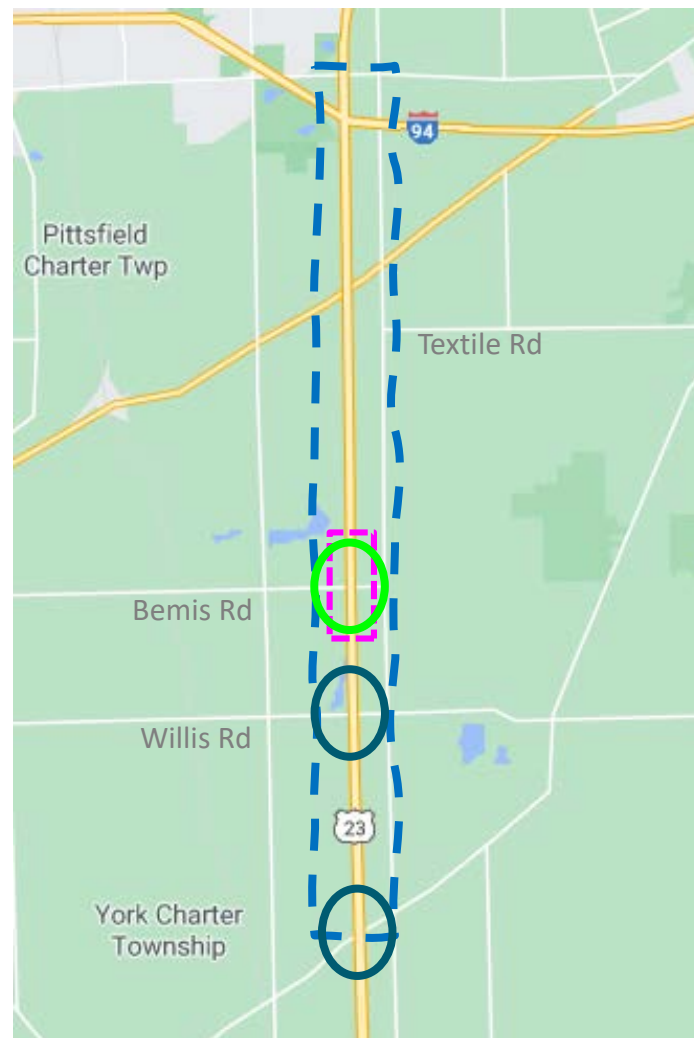
 Full depth reconstruction

 Bridge deck rehab (short duration closures)

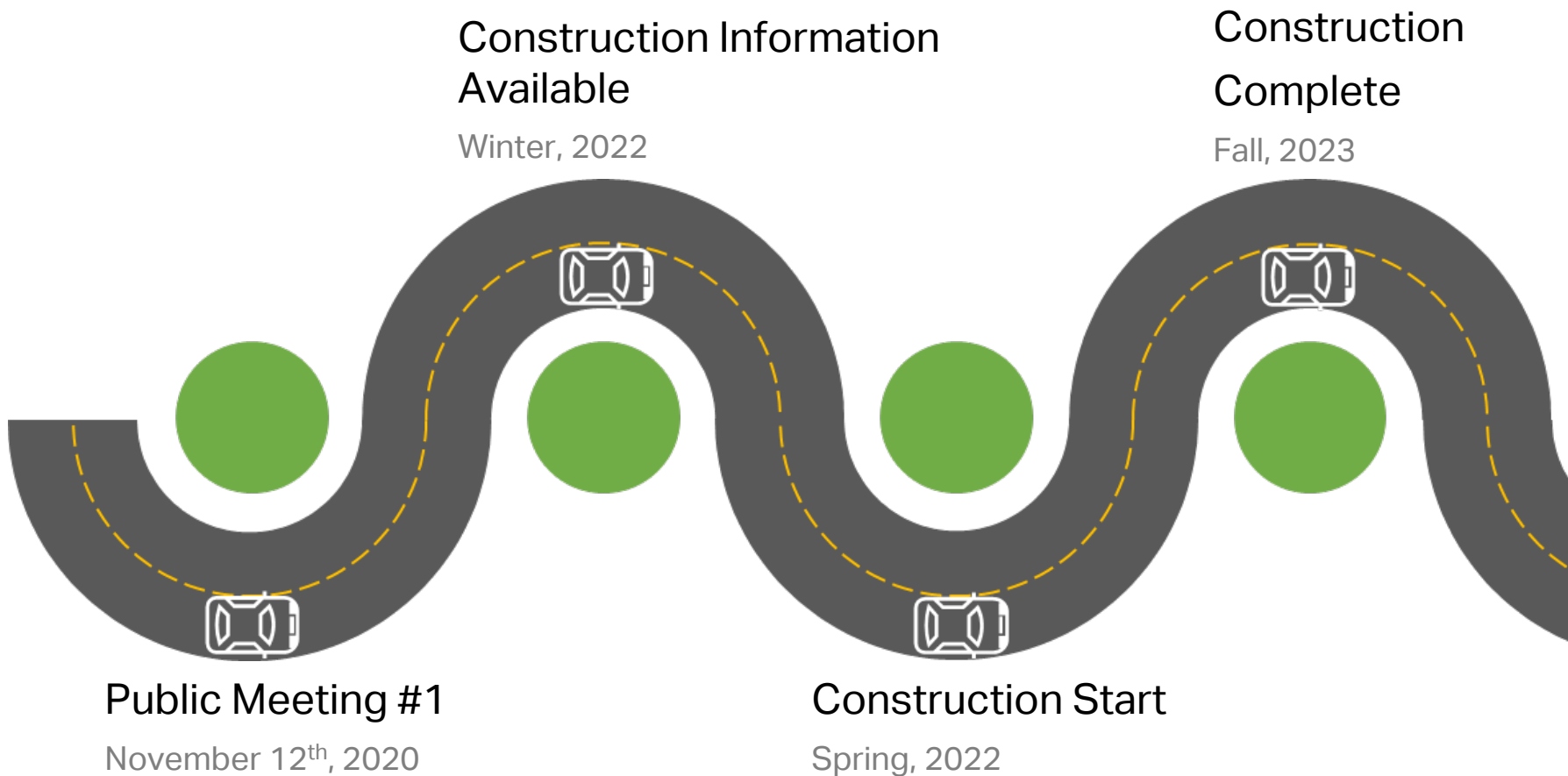
 Bridge deck rehab (long term closure & detours)

Maintain 2 lanes of traffic during peak hours
in each direction

Allow single lane closures during off-peak
times



Project Schedule



Next Steps

- Prepare Preliminary and Final Design Plans
- Work with property owners to obtain any additional right-of-way that might be needed along US-12
- Review Environmental Impacts and Mitigate as required to obtain Project Clearance
- Continue to engage Township and County in project development

QUESTIONS?

- Type your question, or
- Use "raise hand" icon to speak

Call-in attendees will have an opportunity to unmute and speak.

Contact Information

- Please provide concerns/comments discussed at this meeting regarding the project; permanent right-of-way at Prairie Park; permanent right-of-way at Harwood Heritage Preserve; and/or temporary trail closures/impacts to MDOT by **December 5th, 2020**. Please submit to contact information shared in the press release or shown in this presentation.

Lynne Kirby
MDOT Project Manager
kirbyl@Michigan.gov

Kari Martin
MDOT University Region Planner
martink5@Michigan.gov

Monica Monsma
MDOT Environmental Services Section
monsmam@Michigan.gov